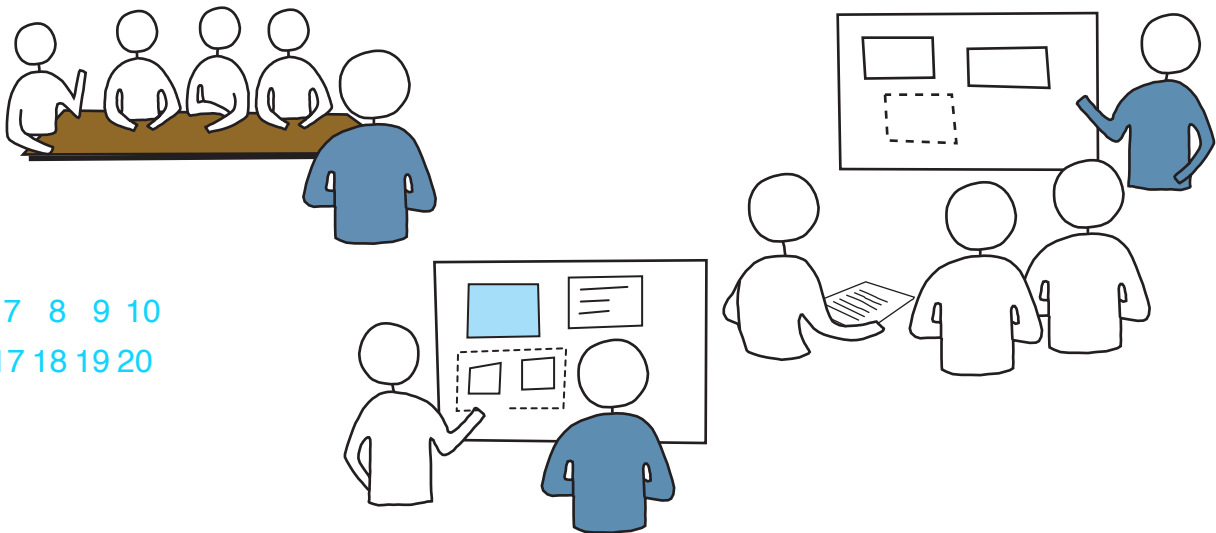
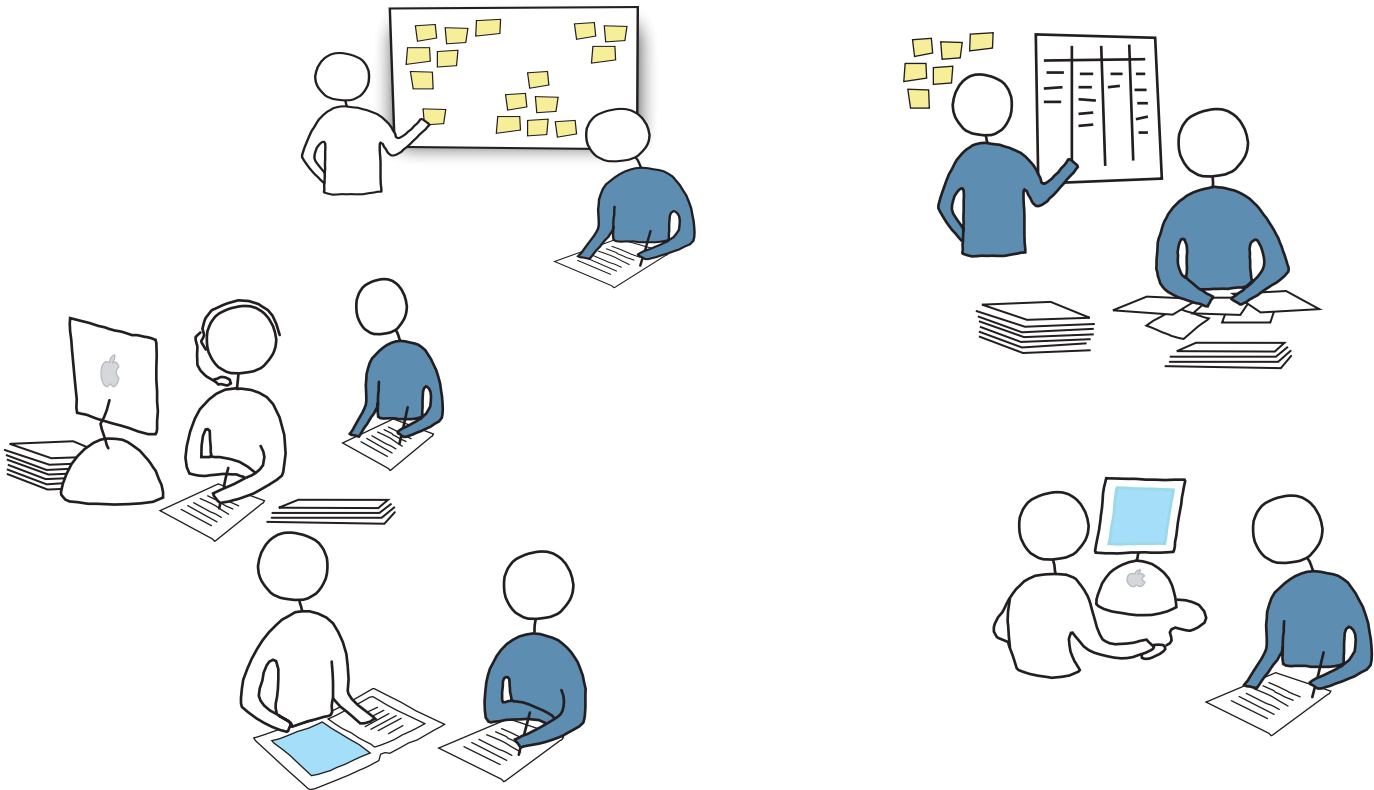


Mapping language,
arts, culture and community - continuity and change:I

1 2 3 4 5 6 7 8 9 10
11 12 13 14 15 16 17 18 19 20

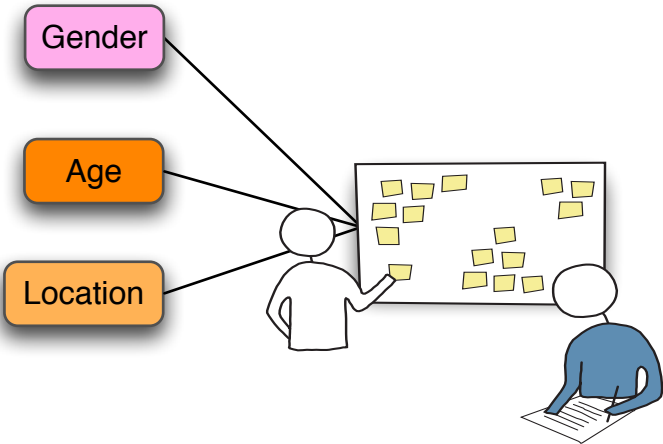


Characteristics

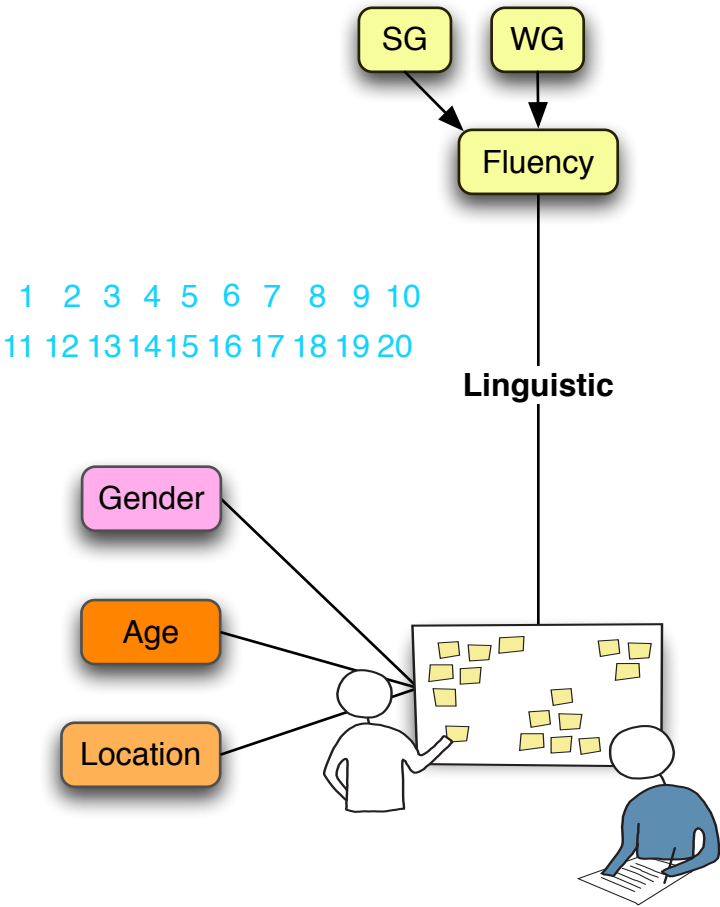


Mapping language, arts, culture and community - continuity and change: I

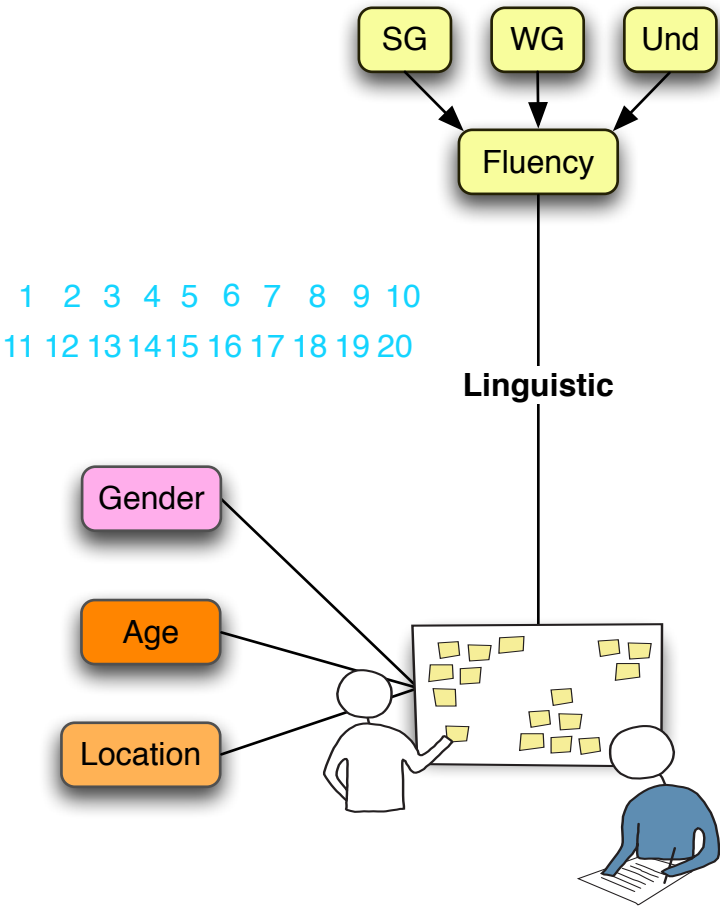
1 2 3 4 5 6 7 8 9 10
11 12 13 14 15 16 17 18 19 20



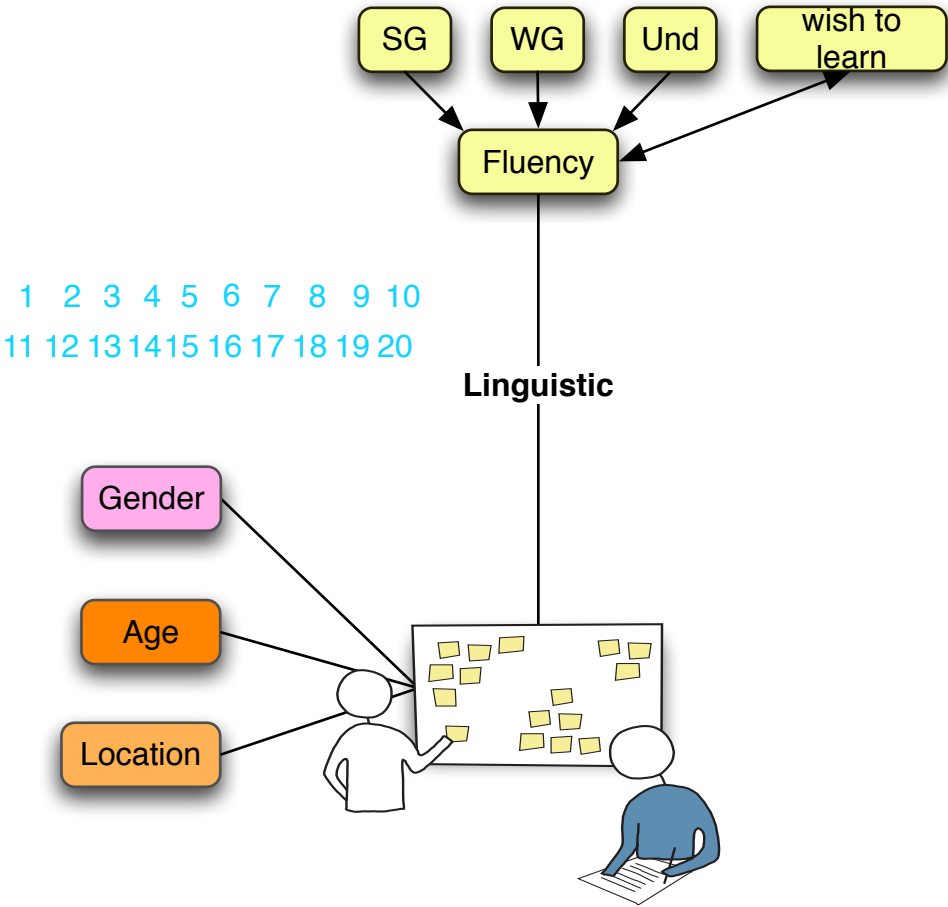
Mapping language, arts, culture and community - continuity and change: I



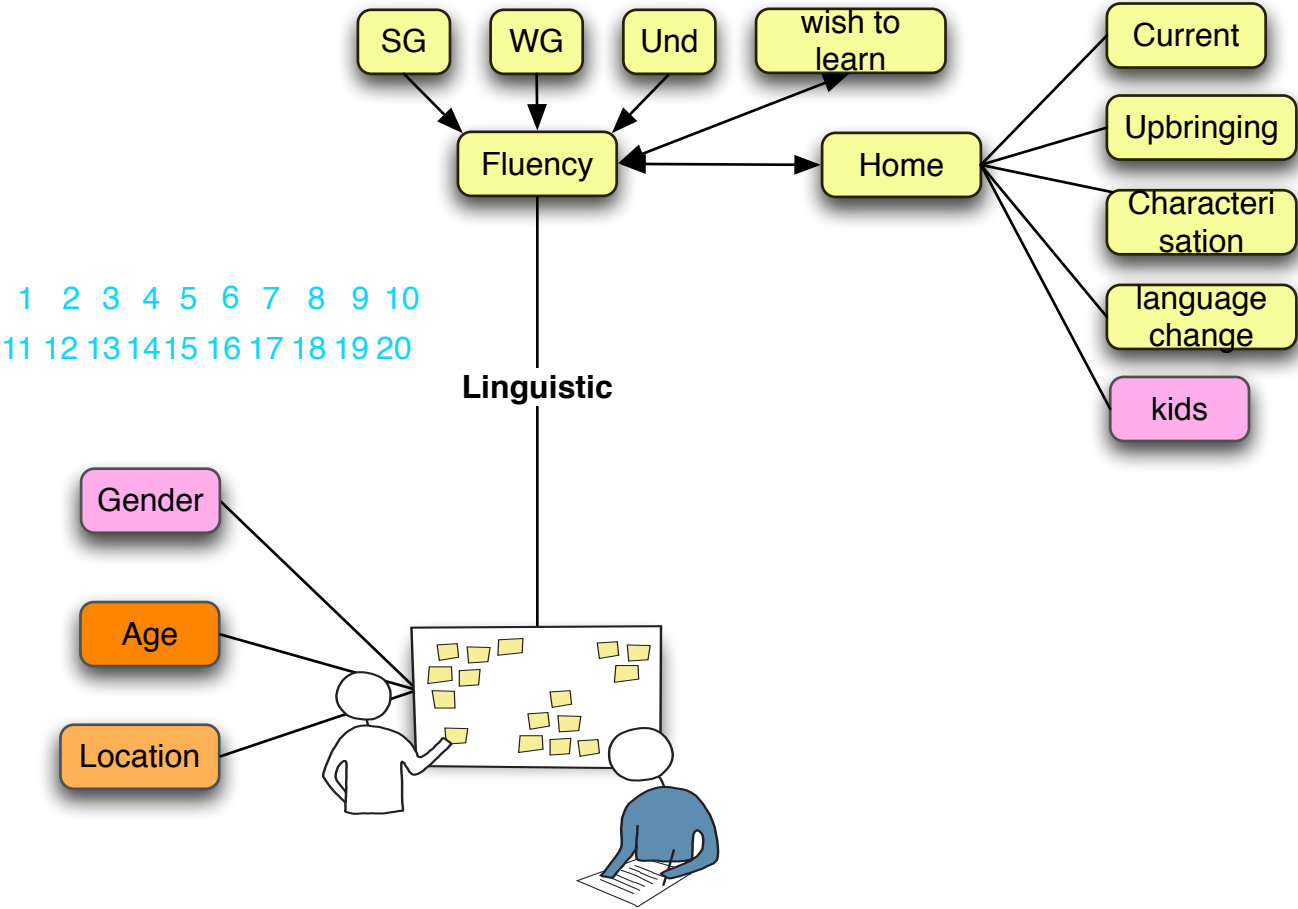
Mapping language, arts, culture and community - continuity and change: I



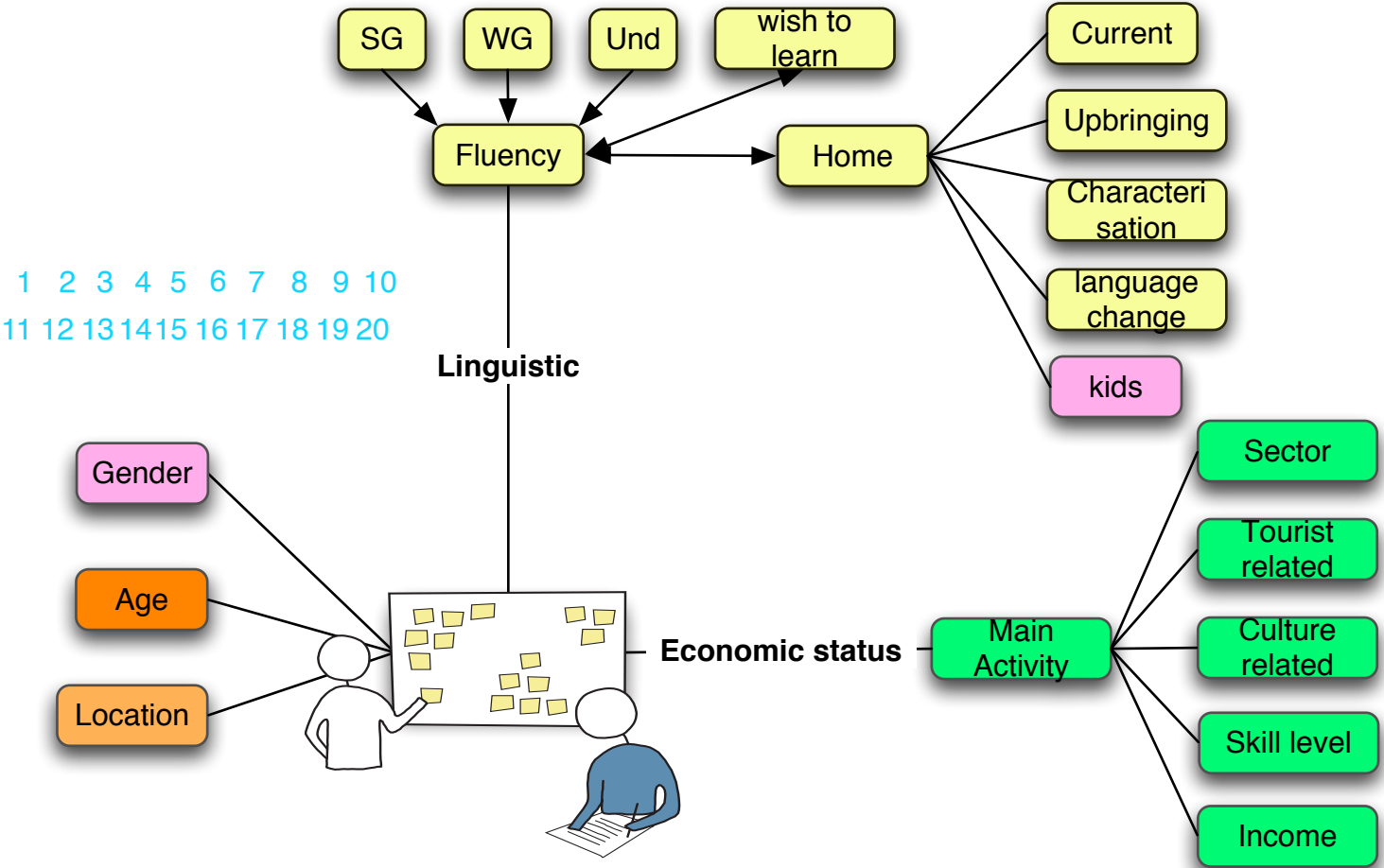
Mapping language, arts, culture and community - continuity and change: I



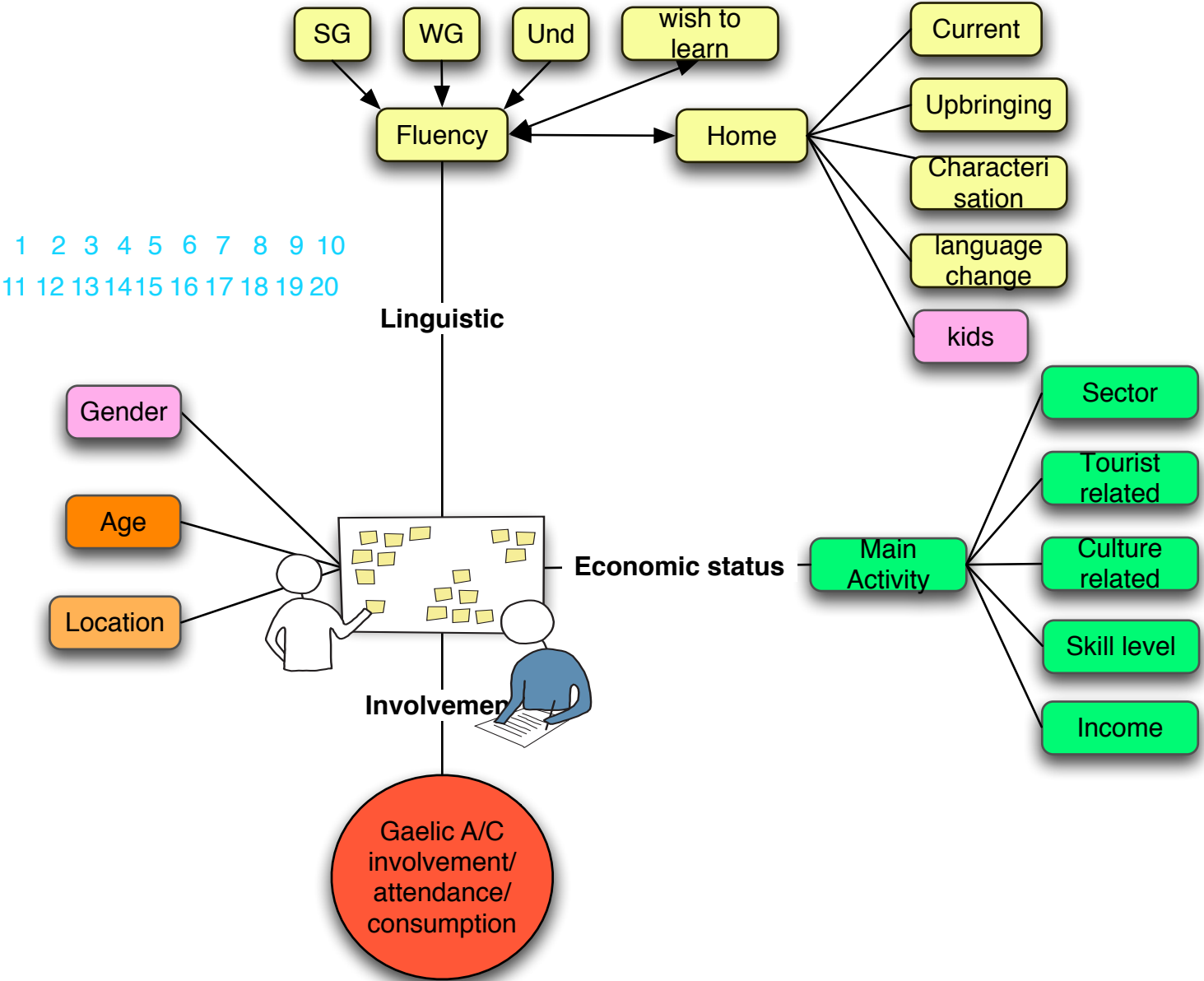
Mapping language, arts, culture and community - continuity and change: I



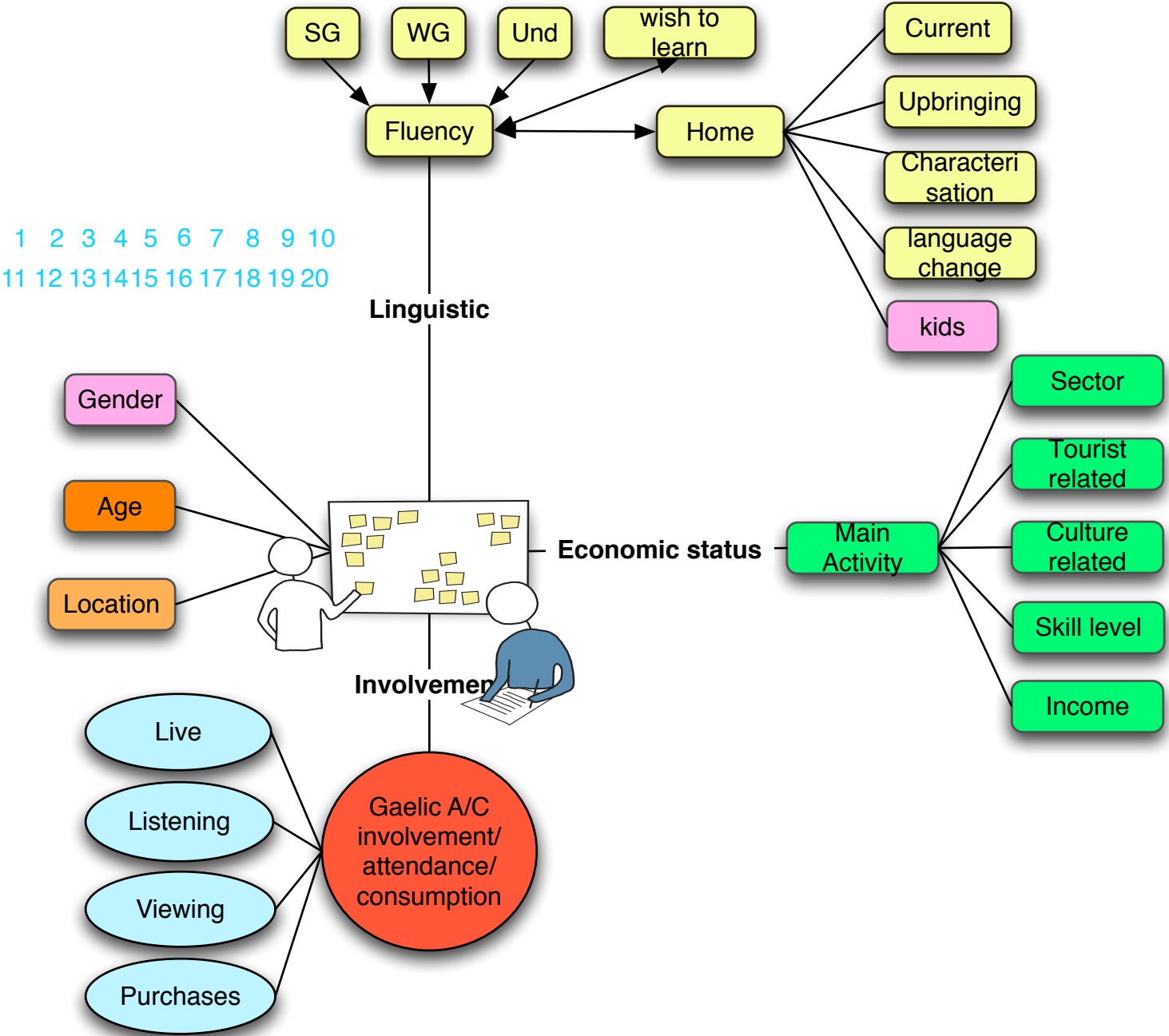
Mapping language, arts, culture and community - continuity and change: I



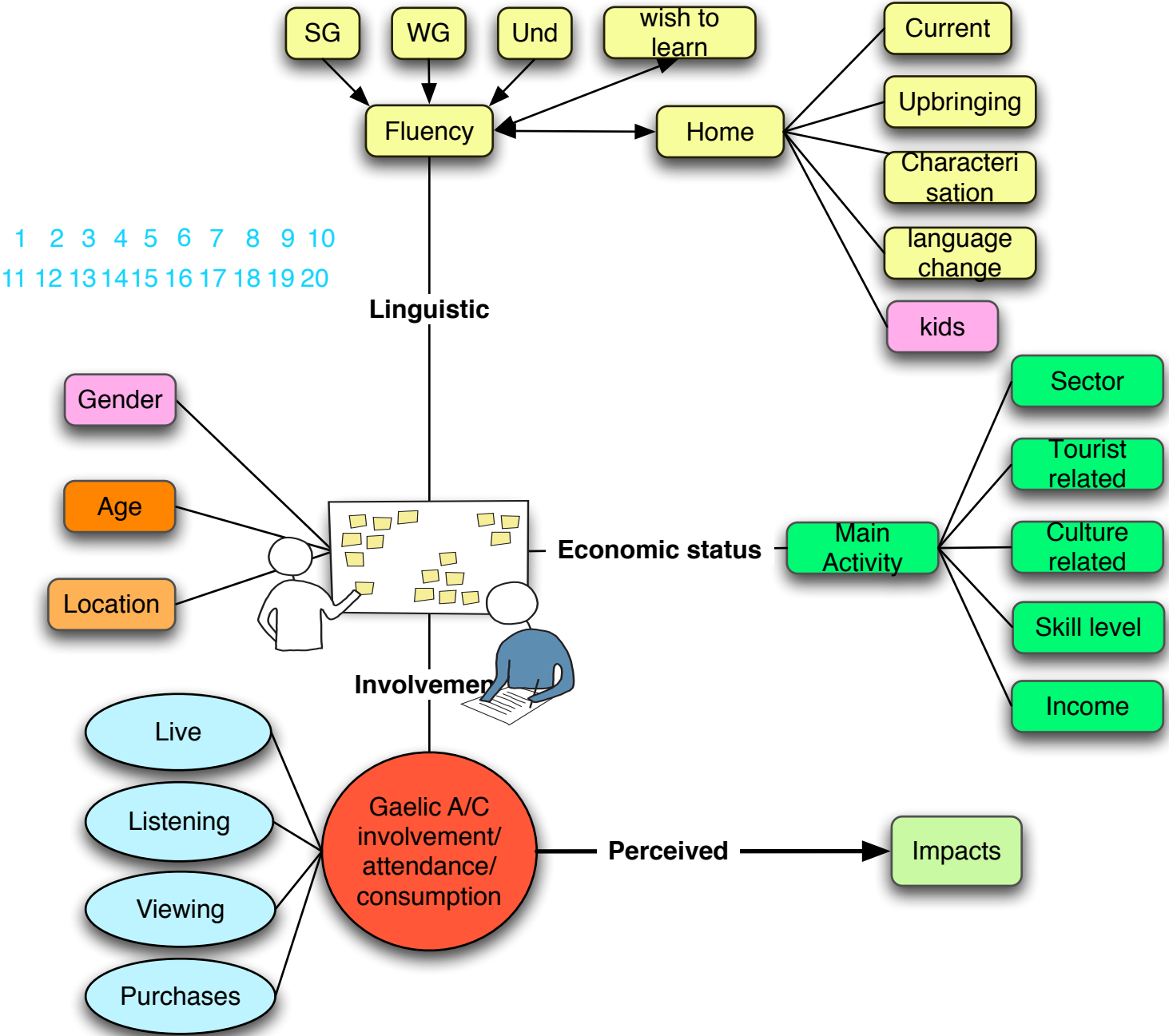
Mapping language, arts, culture and community - continuity and change: I



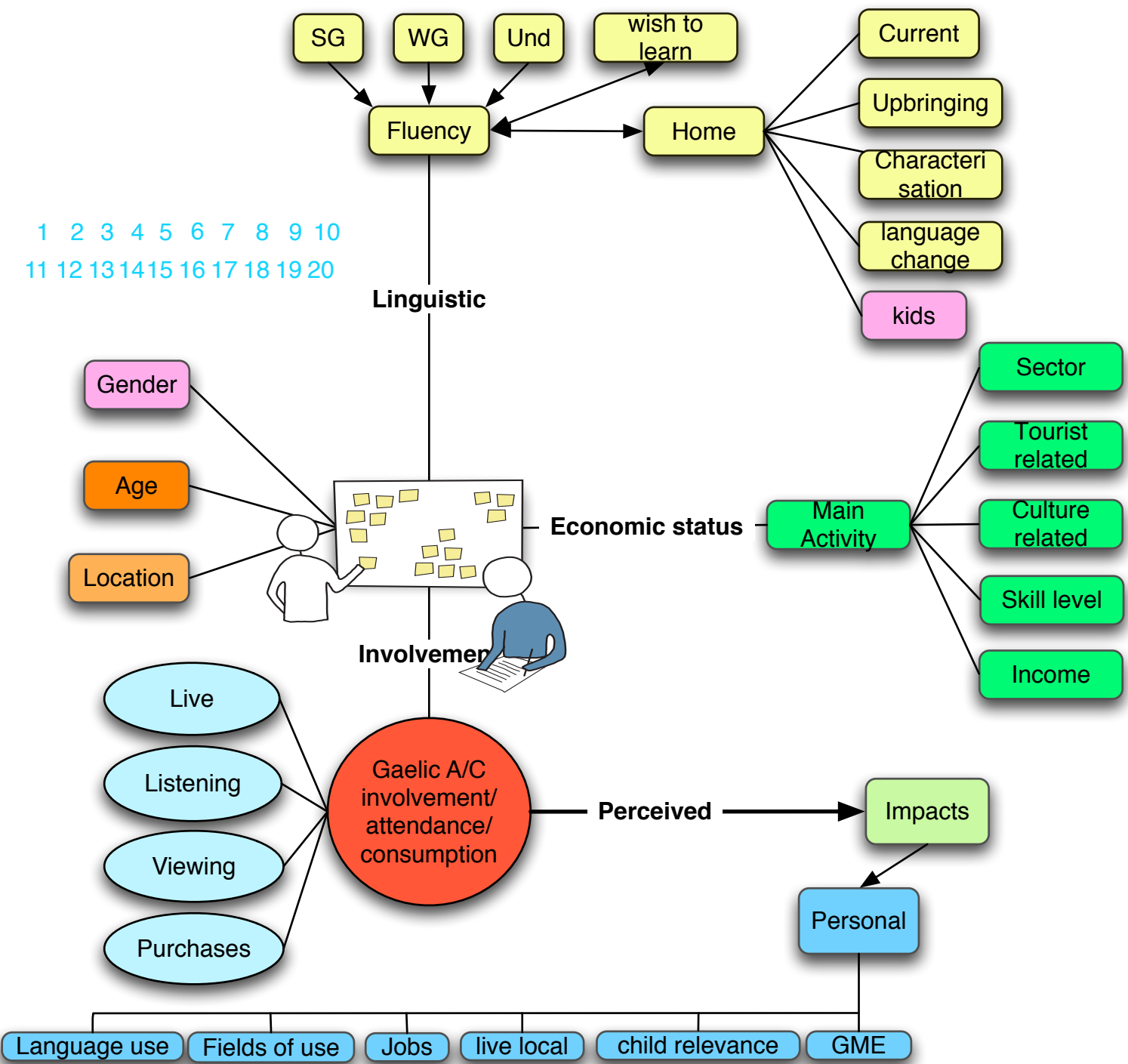
Mapping language, arts, culture and community - continuity and change: I



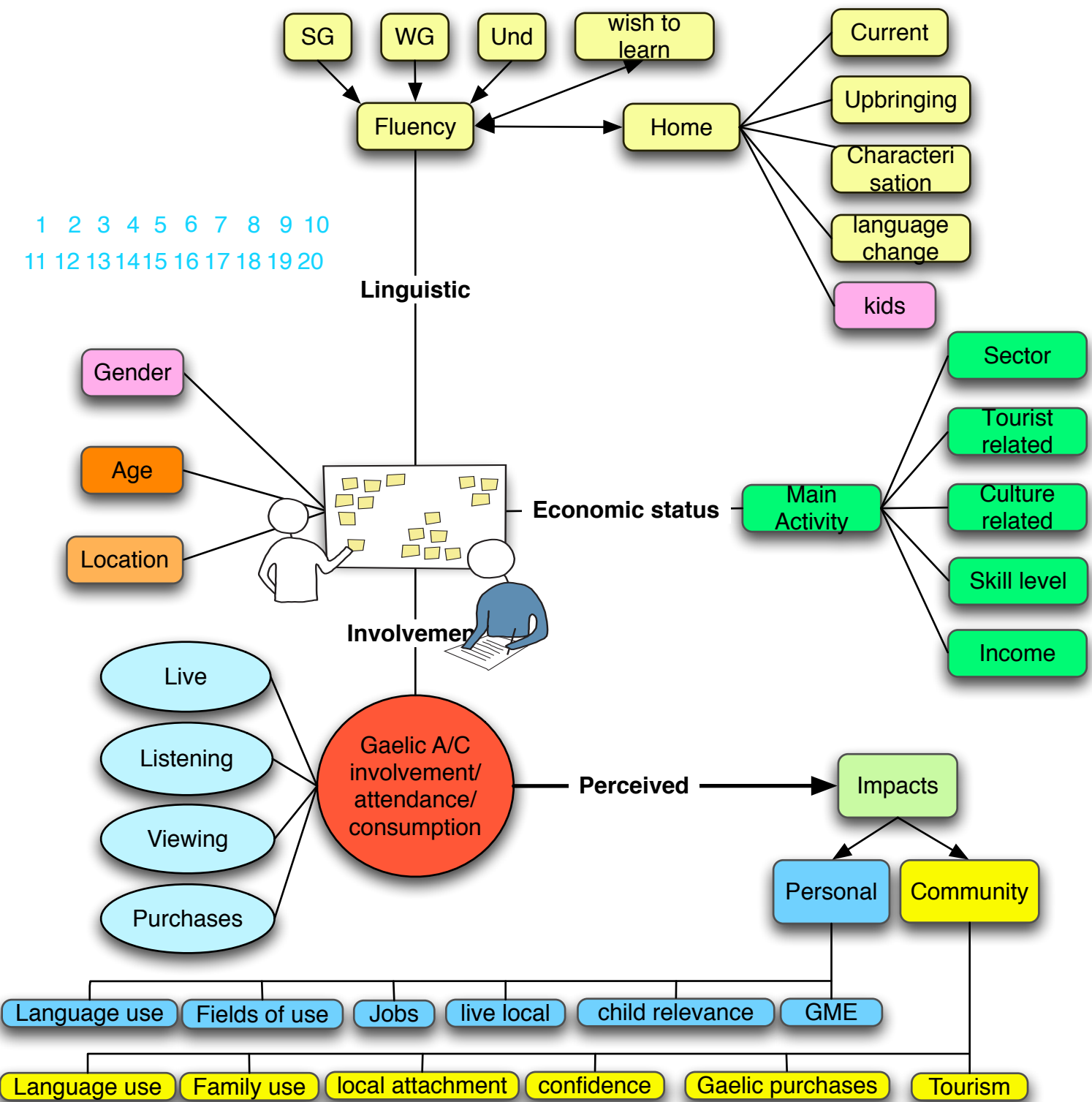
Mapping language, arts, culture and community - continuity and change: I



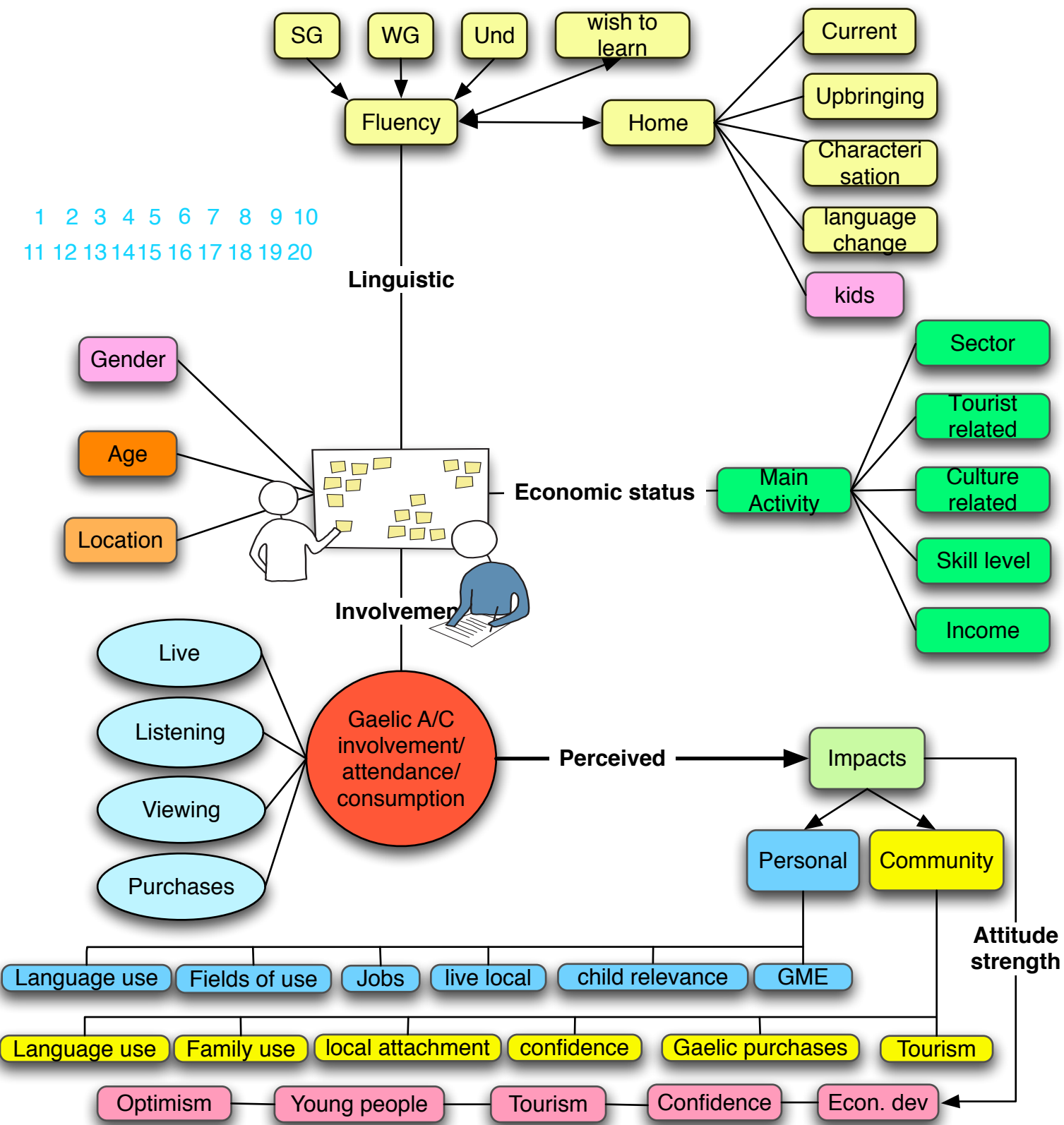
Mapping language, arts, culture and community - continuity and change: I



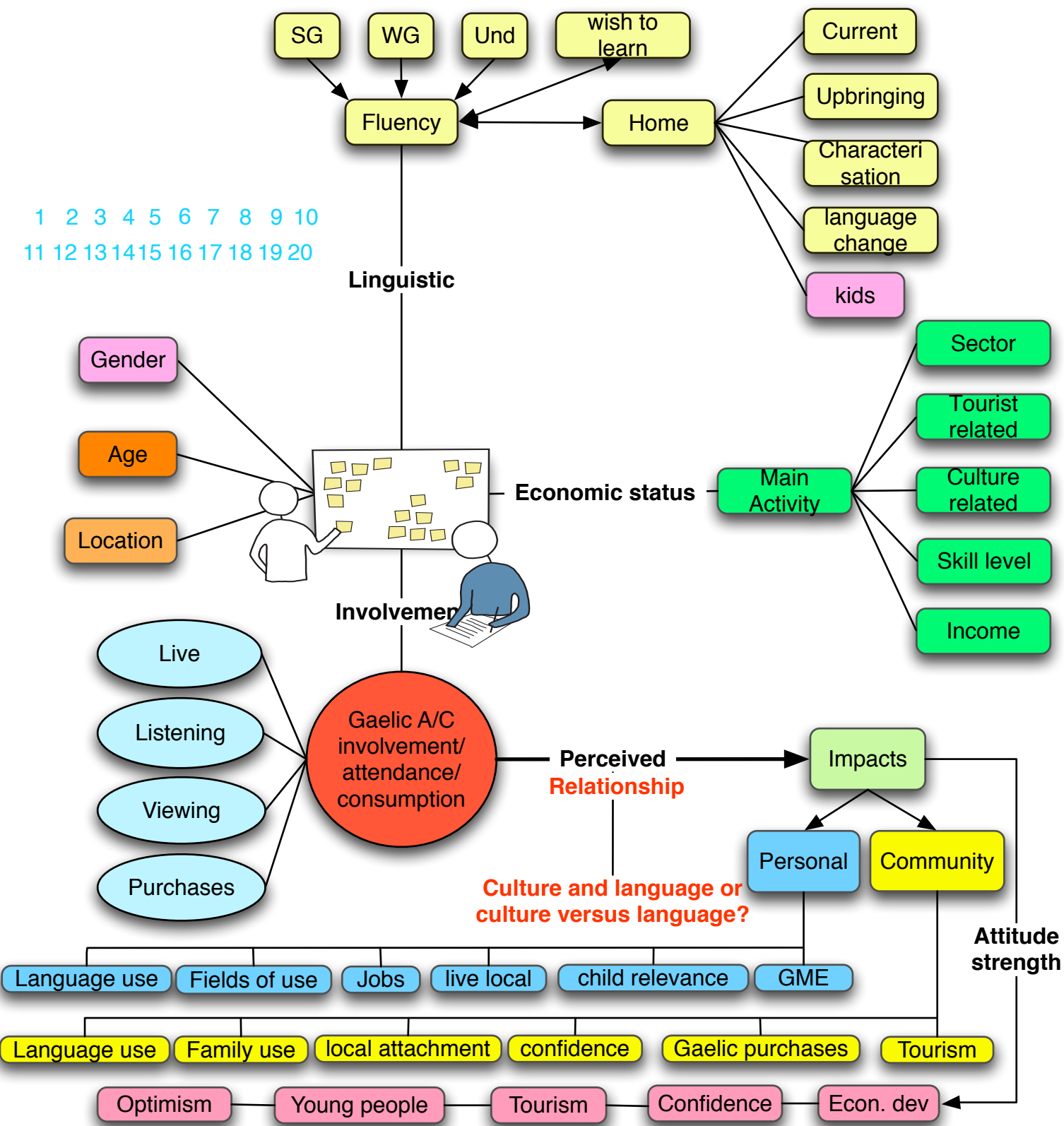
Mapping language, arts, culture and community - continuity and change: I



Mapping language, arts, culture and community - continuity and change:I



Mapping language, arts, culture and community - continuity and change:I



Mapping language, arts, culture and community - continuity and change: 2

1998 report - Demand for Gaelic Artistic and Cultural Products and Services: Patterns and Impacts:

Survey of **1 in 4** in Western Isles/ Skye and
Lochalsh

Approx **8000** individuals

23% return - representative characteristics

2006 report - 10 year comparison

Survey of **1 in 4** in Western Isles/ Skye and
Lochalsh

Approx **7300** individuals

17% return - representative characteristics?

Some points being compared:

Demographic changes

Linguistic change

Patterns of involvement/ attendance/ consumption of GLAC

Views on impacts

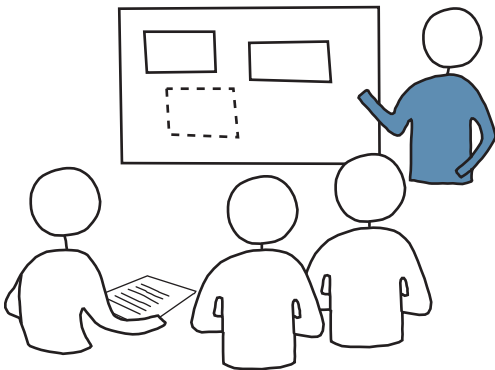
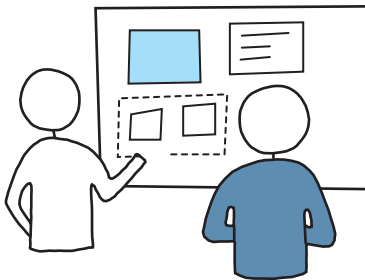
New issues:

Whether WI/ Skye & Lochalsh seen as 'distinctive'

What is the source of any distinctiveness?

What is the relationship between language and
culture

1 2 3 4 5 6 7 8 9 10
11 12 13 14 15 16 17 18 19 20



Mapping language, arts, culture and community - continuity and change: 2

1 2 3 4 5 6 7 8 9 10
11 12 13 14 15 16 17 18 19 20

Which of the following are a source of distinctiveness in the Western Isles/ Skye and Lochalsh?

Gaelic **culture** (the customs, rituals achievements, products - including arts and outlook or **Gaelic 'world view'**)

Gaelic **language**

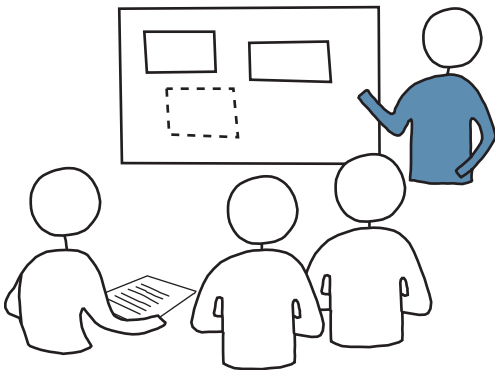
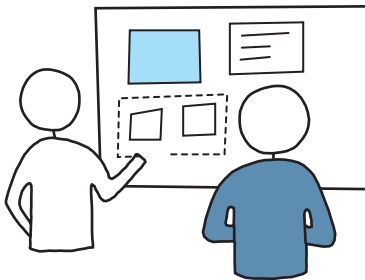
Gaelic **artistic activities** (including TV, radio, CDs, dance, plays, storytelling)

The **Landscape?**

A range of **economic activities** (inc. crofting)

Religion/ religious observance

Gaelic **place names?**



Mapping language, arts, culture and community - continuity and change: 2

How strongly do you agree with the following points:

"The development of the Gaelic language is essential for the future health and development of the distinct culture of the Hebrides"

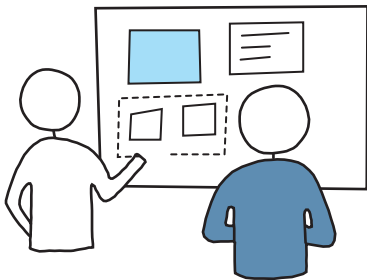
"The development of Gaelic culture depends on finding new ways of expressing the changing experience of the Gael through stories, plays, poetry, painting, radio, TV etc"

"The growth and development of Gaelic artistic activities (TV, radio, CDs, dance, plays, storytelling etc) is essential for the maintenance of the Gaelic language."

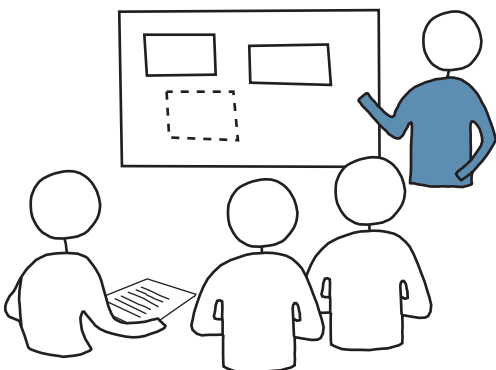
"A major motivation for young people to learn/ develop their Gaelic language is access to Gaelic artistic activities such as TV, radio, internet, CDs, dance, plays, storytelling and the distinct view of the world they reflect"

"Gaelic language is necessary to give full expression to the culture of the Hebrides"

"If the Gaelic language continues to decline, a Gaelic understanding and view of the world will continue to exist and its distinctiveness could be maintained"



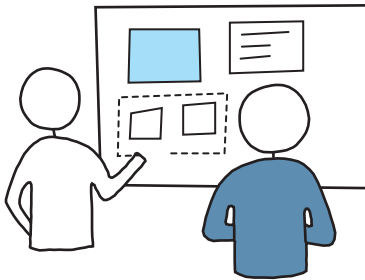
1 2 3 4 5 6 7 8 9 10
11 12 13 14 15 16 17 18 19 20



Mapping language, arts, culture and community - continuity and change: 2

1 2 3 4 5 6 7 8 9 10

11 12 13 14 15 16 17 18 19 20



How you can help:

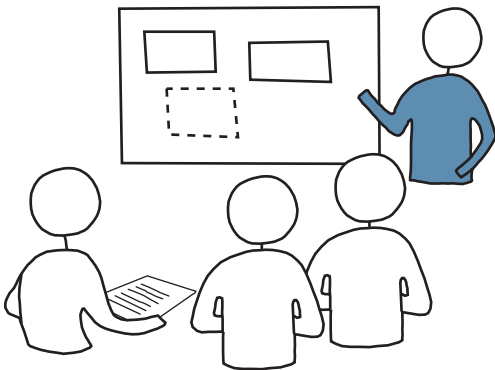
What are the possible problems with this approach?

Are there any traps for us to fall into?

What hypotheses should we use this info to test?

Relationship of which characteristics to which outcomes/ views?

What can a good use of the data cast light upon?



**Mapping language,
arts, culture and community - continuity and change**

Future developments will be posted later.....

1 2 3 4 5 6 7 8 9 10
11 12 13 14 15 16 17 18 19 20